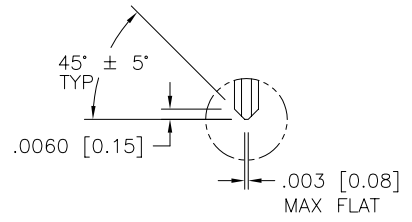
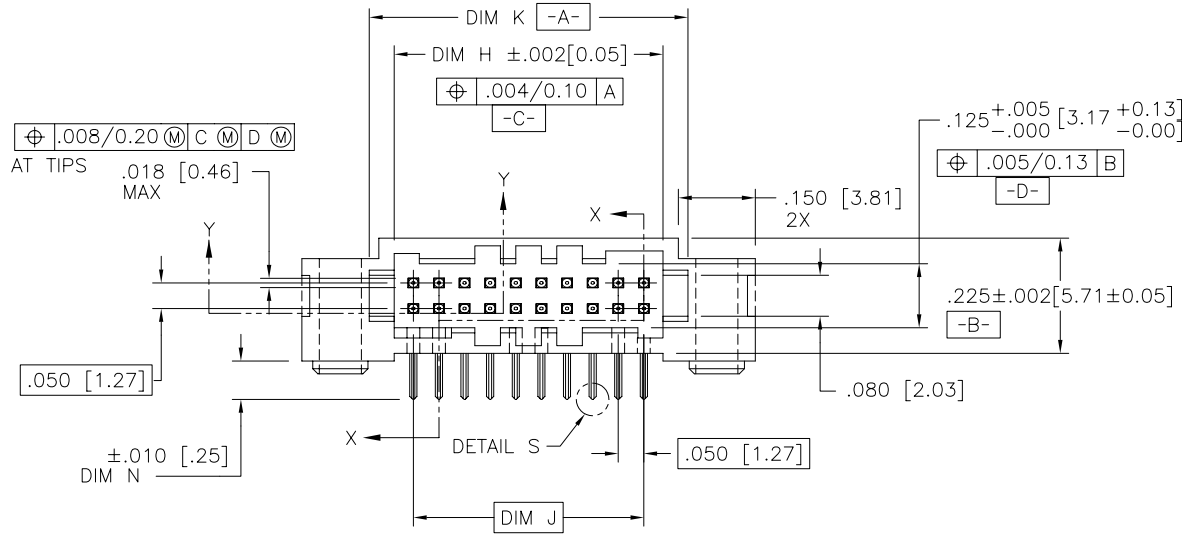
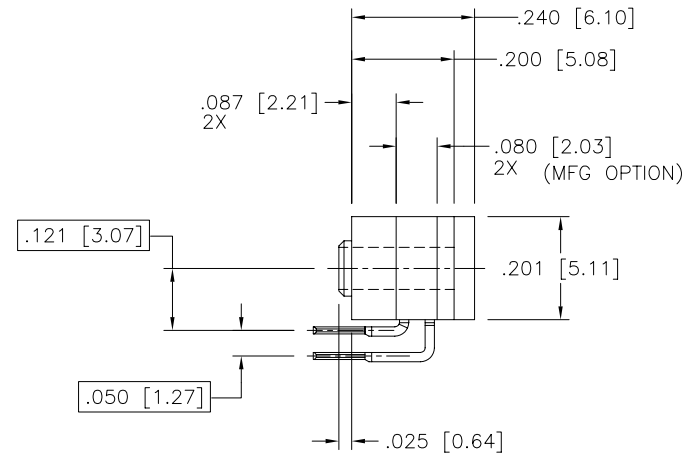
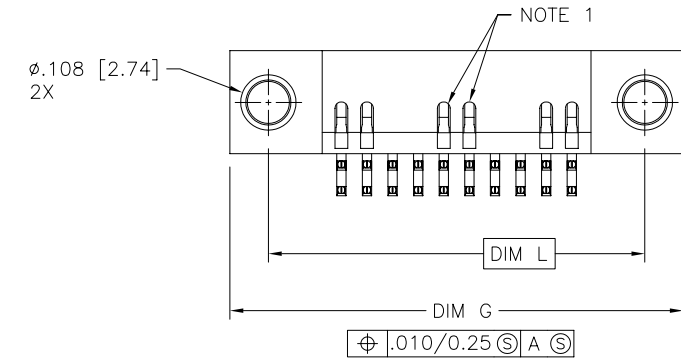


PRODUCT NUMBER  
SEE TABLE



DETAIL S  
SCALE 10/1

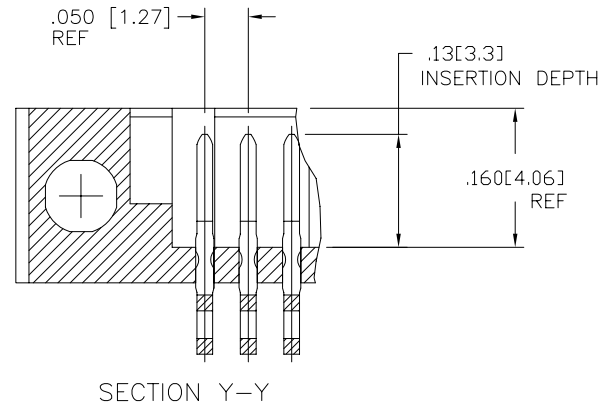
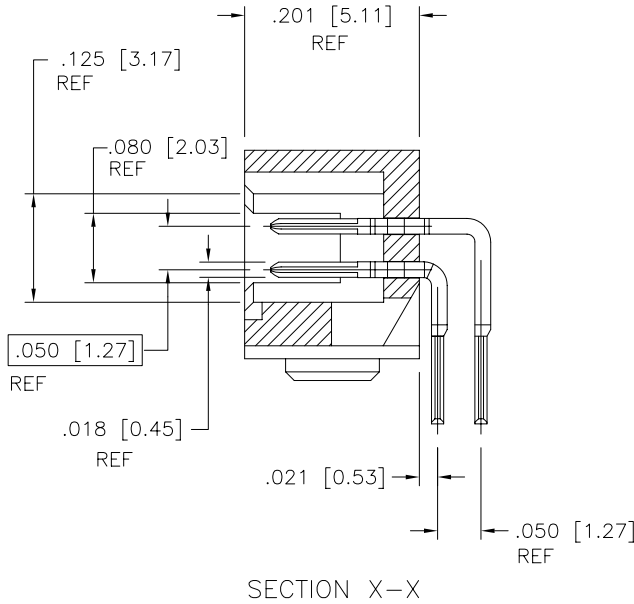


mat'l. code		surface		tolerance		projection		product family	
-		ISO 1302 <input checked="" type="checkbox"/>		ISO 406 ISO 1101				RIBCAGE	
ltr		date		tolerances unless otherwise specified		INCH/MM		title	
E	V80346	SAR	3/2/98	.xx $\pm$ .01/0.3		3:1		RIBCAGE HORIZONTAL HEADER ASSEMBLY	
F	V80709	EPK	4/20/98	angles	linear				
G	V10138	DLW	1/18/01	0° $\pm$ x'					
H	M05-0123	MHT	6/07/05	dr	M. CORNMAN	6/6/95		dwg no	
J	M05-0196	MHT	9/13/05	engr	D. WHITING	6/6/95		sheet 1 of 4 size	
K	M06-0225	ERE	06/12/06	chr	D. WHITING	6/6/95		95780 A3	
L	M06-0370	MHT	9/26/06	appd	D. WHITING	6/6/95		type Product Customer Drawing	
sheet	revision	L	L	L	L				
index	sheet	1	2	3	4				



Copyright FCI

PRODUCT NUMBER  
SEE TABLE



FCJ  
FCJconnect.com

Copyright FCJ

mat'l. code		surface		tolerance		projection		product family	
-		ISO 1302 ✓		ISO 406 ISO 1101				RIBCAGE	
ltr		ecn no		date		tolerances unless otherwise specified		title	
L						.xx±.01/0.3 .xxx±.005/0.13 .xxxx±.0020/0.051		RIBCAGE HORIZONTAL HEADER ASSEMBLY	
						INCH/MM scale 3:1		dwg no sheet 2 of 4 size	
								95780 A3	
								type Product Customer Drawing	
sheet index		revision sheet							

form: A3

PRODUCT NO. NOTE 5,6	SIZE	DIM G	DIM H	DIM J	DIM K	DIM L	TAIL LENGTH DIM N
93120 OR 87402 -105	2X5	.635/16.13	.275/6.90	.200/5.08	.380/9.65	.485/12.32	.075/1.90
-110	2X10	.885/22.48	.525/13.34	.450/11.43	.630/16.00	.735/18.67	
-115	2X15	1.135/28.83	.775/19.68	.700/17.78	.880/22.35	.985/25.02	
-120	2X20	1.385/35.18	1.025/26.03	.950/24.13	1.130/28.70	1.235/31.37	
-125	2X25	1.635/41.52	1.275/32.38	1.200/30.48	1.380/35.05	1.485/37.72	
-130	2X30	1.885/47.88	1.525/38.74	1.450/36.83	1.630/41.40	1.735/44.07	
-135	2X35	2.135/54.23	1.775/45.08	1.700/43.18	1.880/47.75	1.985/50.42	
-140	2X40	2.385/60.58	2.025/51.43	1.950/49.53	2.130/54.10	2.235/56.77	
-145	2X45	2.635/66.93	2.275/57.78	2.200/55.88	2.380/60.45	2.485/63.12	
-150	2X50	2.885/73.28	2.525/64.14	2.450/62.23	2.630/66.80	2.735/69.47	.075/1.90
-150N	2X50	2.885/73.28	2.525/64.14	2.450/62.23	2.630/66.80	2.735/69.47	.125/3.18
-305	2X5	.635/16.13	.275/6.90	.200/5.08	.380/9.65	.485/12.32	.085/2.16
-310	2X10	.885/22.48	.525/13.34	.450/11.43	.630/16.00	.735/18.67	
-320	2X20	1.385/35.18	1.025/26.03	.950/24.133	1.130/28.70	1.235/31.37	
-330	2X30	1.885/47.88	1.525/38.74	1.450/36.83	1.630/41.40	1.735/44.07	
-345	2X45	2.635/66.93	2.275/57.78	2.200/55.88	2.380/60.45	2.485/63.12	.085/2.16
-510	2X10	.885/22.48	.525/13.34	.450/11.43	.630/16.00	.735/18.67	.125/3.18
-515	2X15	1.135/28.83	.775/19.68	.700/17.78	.880/22.35	.985/25.02	
-520	2X20	1.385/35.18	1.025/26.03	.950/24.13	1.130/28.70	1.235/31.37	
-525	2X25	1.635/41.52	1.275/32.38	1.200/30.48	1.380/35.05	1.485/37.72	
93120 OR 87402 -530	2X30	1.885/47.88	1.525/38.74	1.450/36.83	1.630/41.40	1.735/44.07	.125/3.18



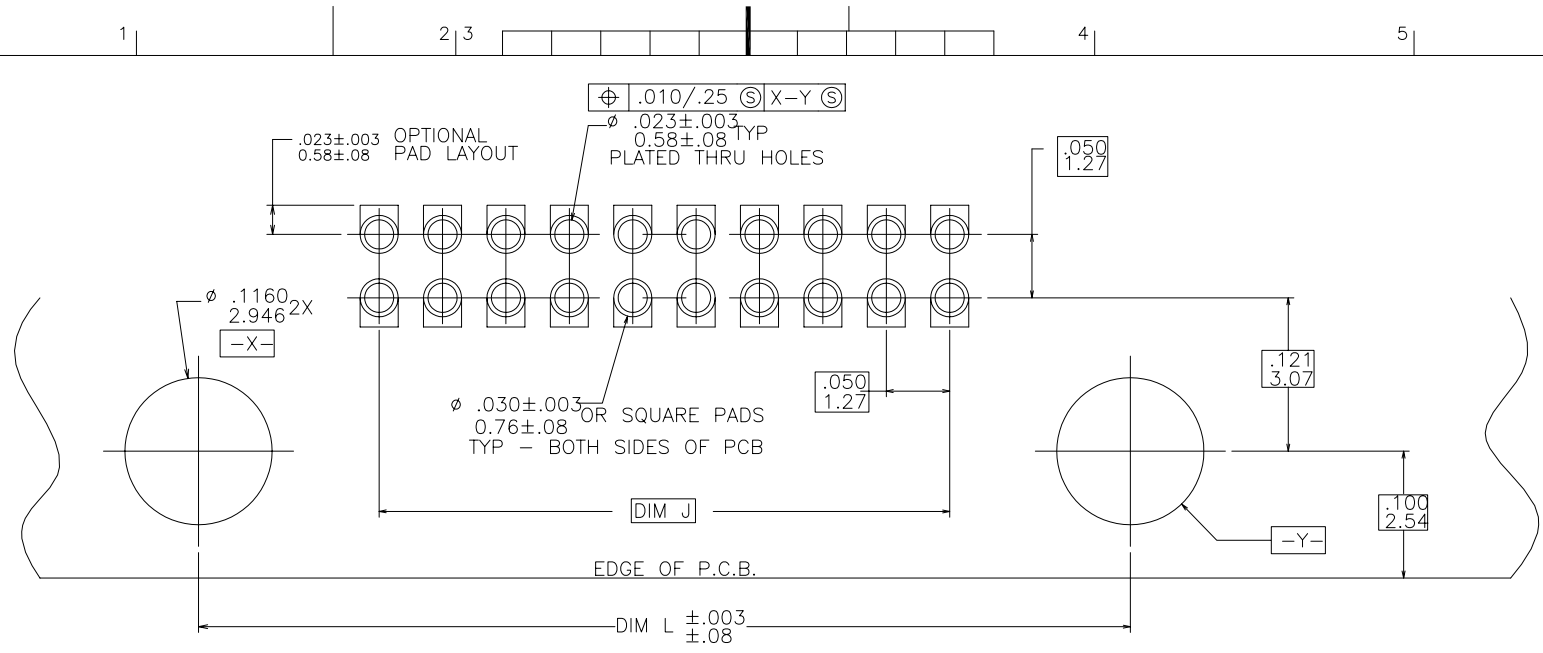
FCJconnect.com

Copyright FCJ

mat'l. code		surface		tolerance		projection		product family	
-		ISO 1302 ✓		ISO 406 ISO 1101				RIBCAGE	
ltr		ecn no dr		date		tolerances unless otherwise specified		title	
L						.xx±.01/0.3 .xxx±.005/0.13 .xxxx±.0020/0.051		RIBCAGE HORIZONTAL HEADER ASSEMBLY	
						INCH/MM scale 3:1		dwg no sheet 3 of 4 size	
								95780 A3	
								type Product Customer Drawing	
sheet index		revision sheet							

form: A3 1 2 3 4 5 6

PRODUCT NUMBER  
SEE TABLE



RECOMMENDED P.C.B. LAYOUT  
SCALE 20/1

NOTES:

1. HOUSING MATERIAL:  
GLASS FILLED THERMOPLASTIC FLAME RETARDANT PER UL 94V-0.  
COLOR: BLACK.
2. TERMINAL PLATING:  
30u"/.76u MIN HARD Au OVER 50u"/1.27uNi ON CONTACT ZONES.  
200u"/5.08u MIN Sn OVER 50u"/1.27u Ni IN SOLDERING ZONES.
3. CORING IN CENTER TO BE PRESENT ON PARTS THAT ARE 2X40 OR LARGER.
4. SUGGESTED FASTENERS:  
#2 HI-LO THREAD 1/4" PANHEAD.  
FASTECH INC.  
(516) 242-5699  
  
OR;  
#1 CAPHEAD SCREW (3/8" LONG) AND NUT FOR (.062/1.57 BOARD).
5. 93120 AND 87402 ARE THE SAME. PLEASE ORDER AS 93120.
6. ADD "LF" SUFFIX AT THE END OF PART NUMBER FOR LEAD FREE OPTION.
7. THIS PRODUCT MEETS EUROPEAN UNION DIRECTIVES AND OTHER COUNTRY REGULATION AS DESCRIBED IN GS-22-008.
8. THE HOUSING WILL WITHSTAND EXPOSURE TO 260°C PEAK TEMPERATURE FOR 15 SECONDS IN A WAVE SOLDER APPLICATION WITH A 1.5mm MINIMUM THICK CIRCUIT BOARD. SEE APPLICATION NOTES/PROCEDURES IF THEY ARE AVAILABLE.



FCIconnect.com

Copyright FCI

mat'l. code		surface		tolerance		projection		product family	
-		ISO 1302 ✓		ISO 406		ISO 1101		RIBCAGE	
ltr		ecn no/dr		date		tolerances unless otherwise specified		title	
L						.XX±.01/0.3		RIBCAGE HORIZONTAL	
				angles		linear		INCH/MM	
				0°±x'		.XXX±.005/0.13		HEADER ASSEMBLY	
						.XXX±.0020/0.051		scale 3:1	
				dr		M. CORNMAN 6/6/95		dwg no	
				engr		D. WHITING 6/6/95		sheet 4 of 4 size	
				chr		D. WHITING 6/6/95		95780 A3	
				appd		D. WHITING 6/6/95		type Product Customer Drawing	
sheet index		revision sheet							



form: A3